

SMT X-ray ETA-7900

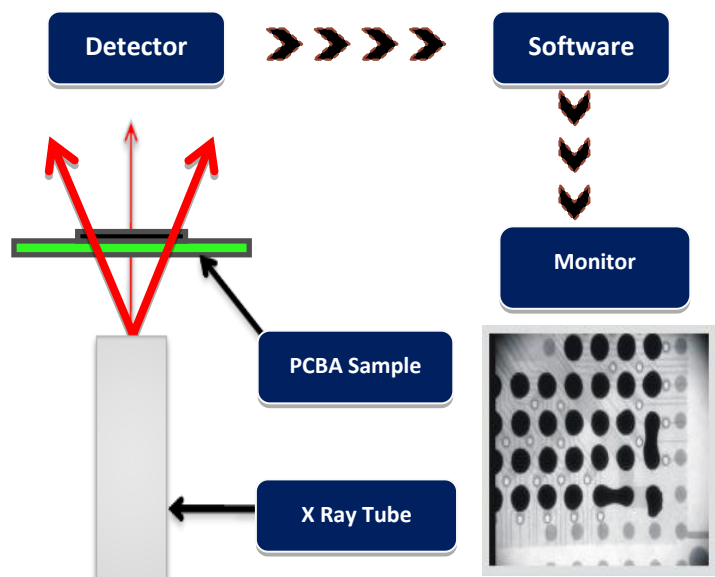
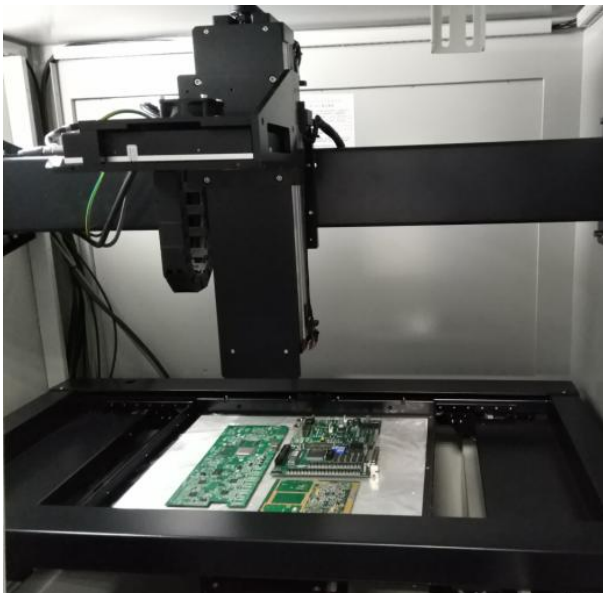


Introduce:

The ETA-7900 is designed to provide high resolution x-ray imaging primarily for the electronics industry. This versatile system is effective for many applications within the PCB manufacturing process. This includes BGA, CSP, QFN, Flip Chip, COB and the wide range of SMT components. ETA-7900 is a powerful support tool for process development, process monitoring and refinement of the rework operation.

Features:

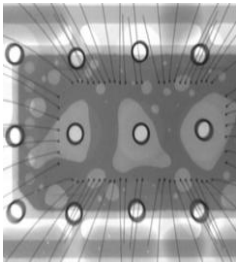
- 1.90kV 5µm closed X-ray tube
- 2.High resolution FPD with 4-axis motion system, meet basic inspection demands
- 3.Navigation in windows, target tracking conveniently
- 4.CNC program, improve efficiency significantly
- 5.Max. loading area 440mm×400mm, max. inspection area 420mm×380mm, with 360X Magnification
- 6.BGA void/area auto-measurement plus report generation
- 7.Multi-function DXI image processing system



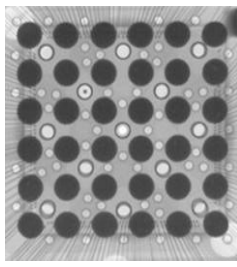
Application:

SMT, BGA, CSP, Flip Chip, LED Detection, Semiconductor, Packaging components, Battery Industry, Electronic components, Automotive parts, Photo-voltaic, Aluminium Die-casting, Moulding Plastic. Ceramics, other special industries.

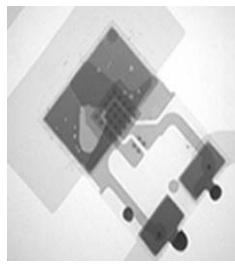
X-Ray Inspection Images:



IC Wire



BGA Voids



LED



Connectors/Cables



Battery

Specification:

Item	Model	ETA-7900
X-Ray Tube	Max. Voltages, Type	90kV, Closed
	Power Consumption	8W
	Focal Spot Size	5 μm
	Motion range (Up and Down)	140mm
	Magnification	360X
Detector	Detector Type	FPD
	Resolution	101 LP/cm
	Effective Area	58mm×54mm
	Motion range (Up and Down)	300mm
System Computer	Operating System	Industrial PC, Win 7, i7 Processor
	Monitor	22" LCD
Software	User Interface	ETA Multi-function DXI image processing system
Working Platform	Max. Loading Area	440mm×400mm
	Max. Inspection Area	420mm×380mm
	Max. Loading Weight	5kg
	Movement Control	Joysticks, Mouse and Keypads
Navigation	Camera	HD Camera, Laser point
Axis	Manipulator	4-axis with X / Y / Z1 / Z2
Equipment Features	Power Supply	AC 110~220V (±10%) 50Hz, 1kW
	Outline Dimensions	1100(W)×1060(D)×1500(H) mm
	System Weight	1000 kg
Optional Accessories	Rotation Jig	
Warranty	One year warranty, free replacement the parts due to original manufacturer's defect, but expect of man-made damages and force majeure	

X-Ray Safety: All X-ray machines manufactured by ETA Technology meet the FDA-CDRH Regulation CFR 21 1020.40 Subchapter J for cabinet x-ray systems. The FDA - CDRH standard for cabinet x-ray systems states that radiation emission will not exceed .5millirem a /hr.2"from any external surface. Our machines (Leakage <1μSv/h) are typically 5-10 times less than the international standards.

Thanks for choosing ETA.

ETA looks forward to win-win cooperation.